

# Fiber optic 100Mbps Ethernet Transceiver



Model **CL-100**

The CL-100 is a Fast Ethernet media converter that translates transmission signals from a twisted-pair 100BASE-TX cable to 100BASE-FX fiber optic cable. The CL-100 can be configured to transmit over one or two fiber strands.

The CL-100 expands network data transmission distances beyond the 100m limitation of copper wire to a maximum of 110km by using fiber optic cable in full duplex mode.

The CL-100 provides auto-sensing detection of full duplex or half duplex signaling. It has easy-to-read diagnostic LED's for continuous status reports on network speed, duplex media access control connection, and network traffic. The CL-100 uses standard RJ-45 UTP/STP and SC or SC/APC fiber optic connectors and is IEEE 802.3u 100BASE-TX/FX compliant and operates with all devices that adhere to this standard.

## Features

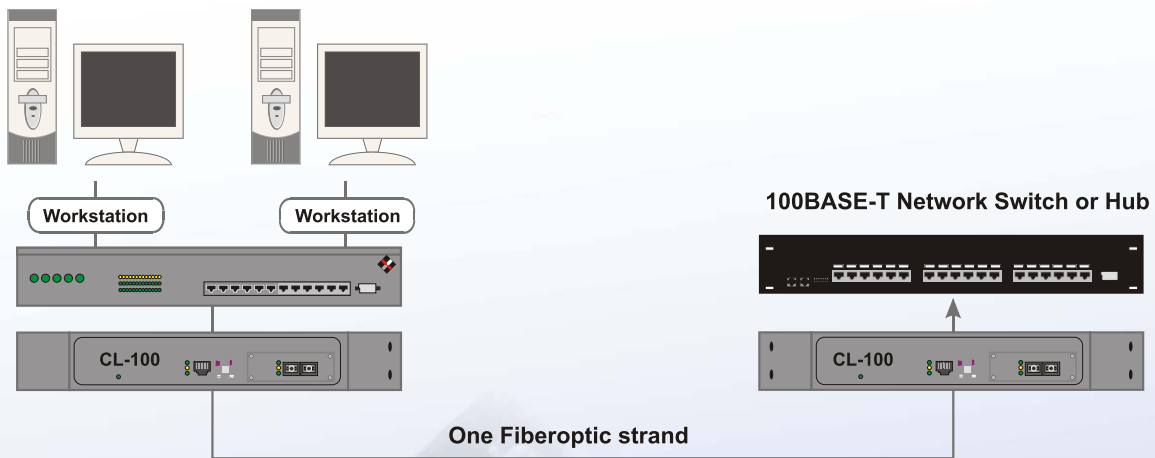
- 100Mbps Full Duplex
- 1 x 100BASE-T Port
- 1 x 100BASE-FX Fiber Port
- 110km Transmission Range
- 1 or 2 Fiber Strand Transmission
- Provide full wire-rate 200 Mbps Duplex Transmission for greater network performance
- Plug-n-Play Ethernet & Fast Ethernet Switch
- IEEE 802.3u compliant
- Guaranteed Switch performance and hardware compatibility with other switches, hubs and adapters

## Model Selection

<b>CL-100-1S-SCA-40</b>	100Base Fiberoptic Ethernet Transceiver, 2 Port, 1 Fiber, SC/APC Connector, 40 Km
<b>CL-100-1S-SCA-80</b>	100Base Fiberoptic Ethernet Transceiver, 2 Port, 1 Fiber, SC/APC Connector, 80 Km
<b>CL-100-2S-SCA-60</b>	100Base Fiberoptic Ethernet Transceiver, 2 Port, 2 Fiber, SC/APC Connector, 60 Km
<b>CL-100-2S-SCA-110</b>	100Base Fiberoptic Ethernet Transceiver, 2 Port, 2 Fiber, SC/APC Connector, 110 Km
<b>CL-100-1M-SC-2</b>	100Base Fiberoptic Ethernet Transceiver, 2 Port, 1 Fiber, SC/PC Connector, 2 Km

Other Connectors and Distances Available Upon Request

## Example Application



## Specifications

<b>Standards</b>	IEEE 802.3u 100BASE-TX/FX Fast Ethernet
<b>Connection Ports</b>	1 UTP port & 1 Fiber port 1 x RJ-45 100 Mbps UTP port and 1 x 100Base-FX Fiber port
<b>Network Media</b>	100BASE-T: UTP category 5 100BASE-T: SC 62.5/125 microns multimode fiber cable
<b>Crossover Push Button</b>	1 crossover button for the UTP port
<b>LED Indicators</b>	Power, Link/Activity, Full Duplex/Collision, 100 Mbps
<b>Dimensions</b>	260mm x 145mm x 44mm
<b>Environment</b>	Operating temperature: 0°C to 40°C Storage temperature: -20°C to 70°C Operating humidity: 10% to 90% RH Storage humidity: 5% to 90% RH
<b>Input Power Requirements</b>	Voltage: 110/240V Auto-sense Internal Power
<b>Regulatory Compliance</b>	FCC Part 15 Class A, CE, UL, CUL, TUV